

SUNY College Cortland

## Digital Commons @ Cortland

---

Football Documents

Football

---

1946

### 1946 Program, Football

State University of New York College at Cortland

Follow this and additional works at: [https://digitalcommons.cortland.edu/football\\_documents](https://digitalcommons.cortland.edu/football_documents)

---

# FOOTBALL

CORTLAND 14

ST. LAWRENCE 3

November 2, 1946

H  
O  
M  
E  
C  
O  
M  
M  
O  
N  
G  
Z



*Larry Tisdale*  
**OFFICIAL PROGRAM**

Price 25c.

*Our Very Best Wishes*

*to*

Cortland State "Red Dragons"

IN 1946 — AND FUTURE YEARS

MARINE MIDLAND TRUST COMPANY  
OF CORTLAND

SANDERS

SPORT SHOP

35 Central Ave.

Cortland, N. Y.

---

*"Everything in Sporting Goods"*

Telephone 1275-J

---

Tennis

Uniforms

Fishing

Badminton

Field Hockey

Ammunition

Athletic Shoes

Baseball

Skiing



DONNAL V. SMITH

October 25, 1946

Hi Alumni:

We are always glad to have you drop in when you are in Central New York, but Home Coming day is particularly a happy occasion. While we haven't had a uniformly successful season we, nevertheless, have enjoyed every minute of it. The men on this year's team have given their best. Our coaching staff has, from their point of view, turned in a very profitable season regardless of the win and loss figures.

We believe that we are going places and are happy to have this opportunity to tell you what we are doing. This week-end has long been an annual affair and we hope that your experiences will assure your return next fall.

For myself and all of the faculty it has been pleasant having you with us this week-end and may you return to your tasks refreshed and enthusiastic in the support of your Alma Mater.

Donnal V. Smith  
President



Coaching Staff: John MacPhee, Asst. Coach;  
Clint Taft, Arnold Maville, Jim White—Student Coaches

"Tony" Tesori, Asst. Coach;

George Linck, Trainer  
Joe Dente, Mgr.

# WILSON'S

LEADING JEWELERS

9 Main St.

Cortland

*For All the Things  
You Need,  
All You Need Is Wilson's*

Loafers

Saddle Shoes

by Sandler of Boston

SARVAY  
Shoe Company

Central Ave.



HARDING *Back*



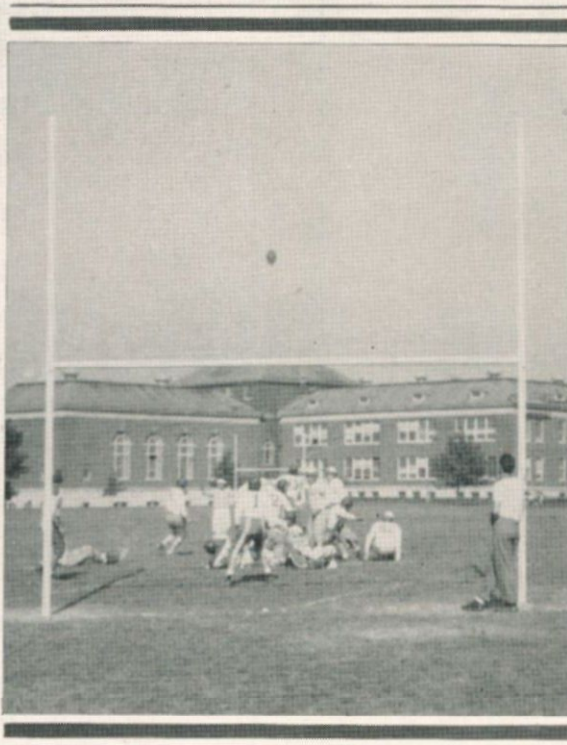
HAMLETT *Back*



MACINTYRE *Back*



SCHUMACHER *End*



BEATTIE *Back*



LIPSINS *Tackle*



BAKER *End*



MARCINO *Guard*



KUCKINS *Center*



POSCH *guard*




BICKFORD *Tackle*

Compliments of  
**IRA DEXTER**  
Cigar Store  
CORTLAND, N. Y.

Compliments of  
**BETA PHI**  
**EPSILON**

**FABRIZIO**  
Tailors  
"For the Quality Clothes  
of Cortland"

Compliments  
**MIDLAND FARMS, Inc.**  
17 Groton Avenue  
MILK                      ICE CREAM

  
Compliments  
**CORTLAND STATE**  
**TEACHERS**  
**BOOK STORE**

We Suggest  
**DOM'S GRILL**  
After the Game  
13 Groton Ave.

**Cortland Photo Service**  
100 Groton Ave.  
DEVELOPING  
PRINTING  
ENLARGING  
**Daily Service**





FRANCIS J. MOENCH  
Director of Training for Physical  
Education and Health

Cortland State Teachers has always promoted competitive athletics as a part of a well-rounded physical education. During the past few years, competitive athletics went to war. One has only to read the record to learn of the great contribution made by competitive athletics to a country at war. Our competitive sports should be of even greater value to a Democratic nation at peace. It is with keen interest and professional satisfaction, then, that we look forward to the renewal of our pre-war sports program with the return of intercollegiate football and soccer. The year 1946 will go down in history as a banner year for athletics at Cortland only in so far as the members of the teams, the coaching staff, the student body, the college faculty and administration and our loyal Cortland supporters join forces to make it the best year ever.

FRANCIS J. MOENCH

Students, Faculty, Alumni, and Friends:

We are tickled to be back in intercollegiate football competition again. We expect the best team ever and so do all of our opponents.

Get behind the team and show them that you will support them and I am sure that you will be pleased with the results.

COACH DAVIS



CARL A. DAVIS  
Head Coach



DR. MOFFETT  
Director of Athletics

Cortland State Teachers College is highly pleased to be able this year to reinstate football as an integral part of its intercollegiate athletic program. We welcome the members of the St. Lawrence team and their followers to our campus today and sincerely hope they will return often in the future as our guests.

On behalf of the Men's Athletic Association we wish to express our appreciation to all of the associations, organizations and other agencies who have contributed to the successful promotion of inter-collegiate athletics at Cortland this year. We extend especial thanks to the business firms who by their advertisements in the program have made its publication possible, and to the Cortland Baking Company for furnishing the public address system for our remaining home football games.

D. C. Moffett



## ST. LAWRENCE UNIVERSITY ROSTER

| NO. | NAME               | POS. | AGE | HT.   | WT. | HOMETOWN          |
|-----|--------------------|------|-----|-------|-----|-------------------|
| 2   | Chapman, Don       | H.B. | 20  | 5'8"  | 158 | Massena           |
| 4   | Guardino, Joe      | H.B. | 19  | 5'6"  | 160 | Watertown         |
| 5   | Walters, John      | Q.B. | 24  | 5'10" | 168 | Gouverneur        |
| 6   | Hayden, William    | H.B. | 21  | 5'8"  | 160 | Canton            |
| 7   | Crottz, Joseph     | H.B. | 23  | 5'8"  | 150 | Laurelton         |
| 8   | Ford, John         | C.   | 23  | 5'10" | 155 | N. Waterford, Me. |
| 9   | Armstrong, Ed      | H.B. | 24  | 5'8"  | 160 | Binghamton        |
| 10  | Sherry, James      | E.   | 20  | 6'1"  | 180 | Laurelton         |
| 11  | Many, Howard       | G.   | 20  | 5'10" | 180 | Ozone Park        |
| 12  | Sawchuk, Peter     | E.   | 22  | 5'8"  | 154 | Schenectady       |
| 13  | Brettell, Charles  | Q.B. | 20  | 6'1"  | 160 | Valley Stream     |
| 14  | O'Rourke, Paul     | E.   | 23  | 6'    | 175 | Kenmore           |
| 16  | Bocciolatt, Carmen | H.B. | 24  | 5'9"  | 160 | Watertown         |
| 17  | Maley, James       | E.   | 24  | 5'9"  | 175 | Kenmore           |
| 20  | Eysaman, Gerald    | C.   | 22  | 5'10" | 185 | Mohawk            |
| 22  | Cochi, Oscar       | Q.B. | 27  | 5'8"  | 175 | St. Johnsville    |
| 23  | Oddi, Tom          | C.   | 21  | 5'9"  | 175 | Watertown         |
| 25  | Gatens, Eugene     | F.B. | 23  | 5'9"  | 186 | Englewood, N. J.  |
| 26  | Ryan, Thomas       | E.   | 22  | 6'3"  | 185 | Baldwin           |
| 28  | Audet, Olans       | E.   | 23  | 5'10" | 185 | Piercefield       |
| 32  | Moro, John         | E.   | 21  | 6'3"  | 185 | N. Tarrytown      |
| 33  | Hefti, James       | H.B. | 26  | 6'1"  | 200 | Scarsdale         |
| 34  | Milligen, Richard  | Q.B. | 20  | 5'10" | 188 | Brightwater       |
| 35  | Scott, Robert      | G.   | 24  | 6'0"  | 190 | Ausable Forks     |
| 37  | Barron, John       | G.   | 20  | 6'0"  | 190 | Tarrytown         |
| 39  | Pernasilice, Felix | F.B. | 20  | 6'0"  | 192 | Lowville          |
| 40  | Barron, William    | G.   | 23  | 5'10" | 185 | Tarrytown         |
| 41  | Quigley, John      | G.   | 21  | 6'2"  | 184 | Auburn            |
| 43  | McKinley, Howard   | T.   | 21  | 6'4"  | 225 | Brooklyn          |
| 44  | Scheim, Otto       | T.   | 24  | 6'0"  | 224 | Hicksville        |
| 45  | Haley, Paul        | T.   | 23  | 6'0"  | 220 | Watertown         |
| 47  | Van Derzee, George | F.B. | 21  | 6'3"  | 210 | Tarrytown         |
| 48  | Baldwin, George    | E.   | 20  | 6'3"  | 205 | Baldwin           |
| 49  | Leach, George      | T.   | 24  | 6'1"  | 245 | Yorkville         |



Compliments of  
**DELTA KAPPA**

Compliments

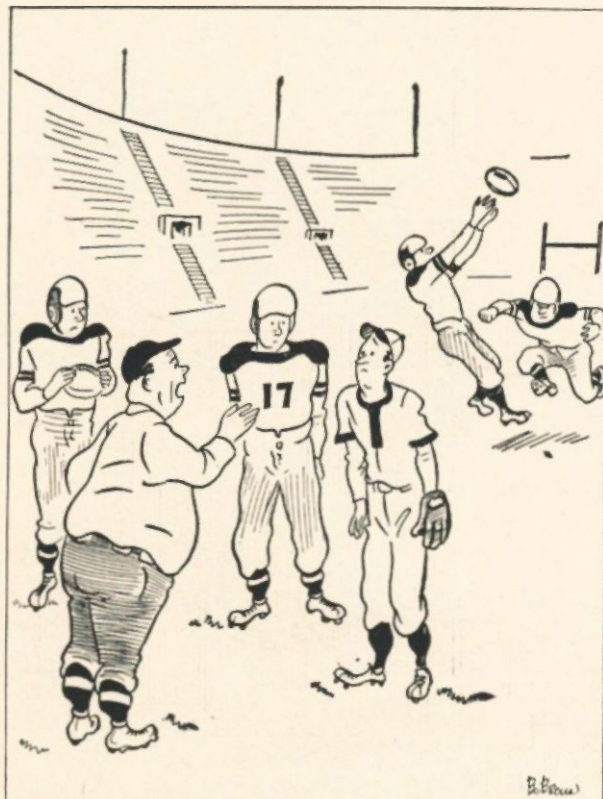
**DR. M. B. GLEZEN**

DENTIST

# CORTLAND RED DRAGONS



Front row—Left to Right—Coach Davis, Kuckins, Martone, Mueller, Krouse, Stevens, Farley, Tesori  
 Second row—Maville, A. Thompson, Kellman, Harding, Craumer, McIntyre, Taft, White  
 Third row—MacPhee, Marcino, Baker, Beattie, Hamblet, Lipsius, Keefer, Hurley  
 Fourth row—Chase, Connors, Head, Jackson, Saurhauser, Mrozack, Bickford, Schalk, E. Thompson  
 Fifth row—Puff, Redmond, C. Fuge, O'Shea, Earle, G. Fuge, Hornbeck, Maloney, Errickson  
 Sixth row—Keenan, Walsh, Doran, Drake, Westerman, Hawksly, Hess, Davis, Boyce  
 Seventh row—Posch, Murray



"No! no! Clarence — I said the uniform in the *left* hand locker!"

After the Game

## THE TREAT SHOP

Is the Nearest Spot

GROTON at GRAHAM

just down the hill

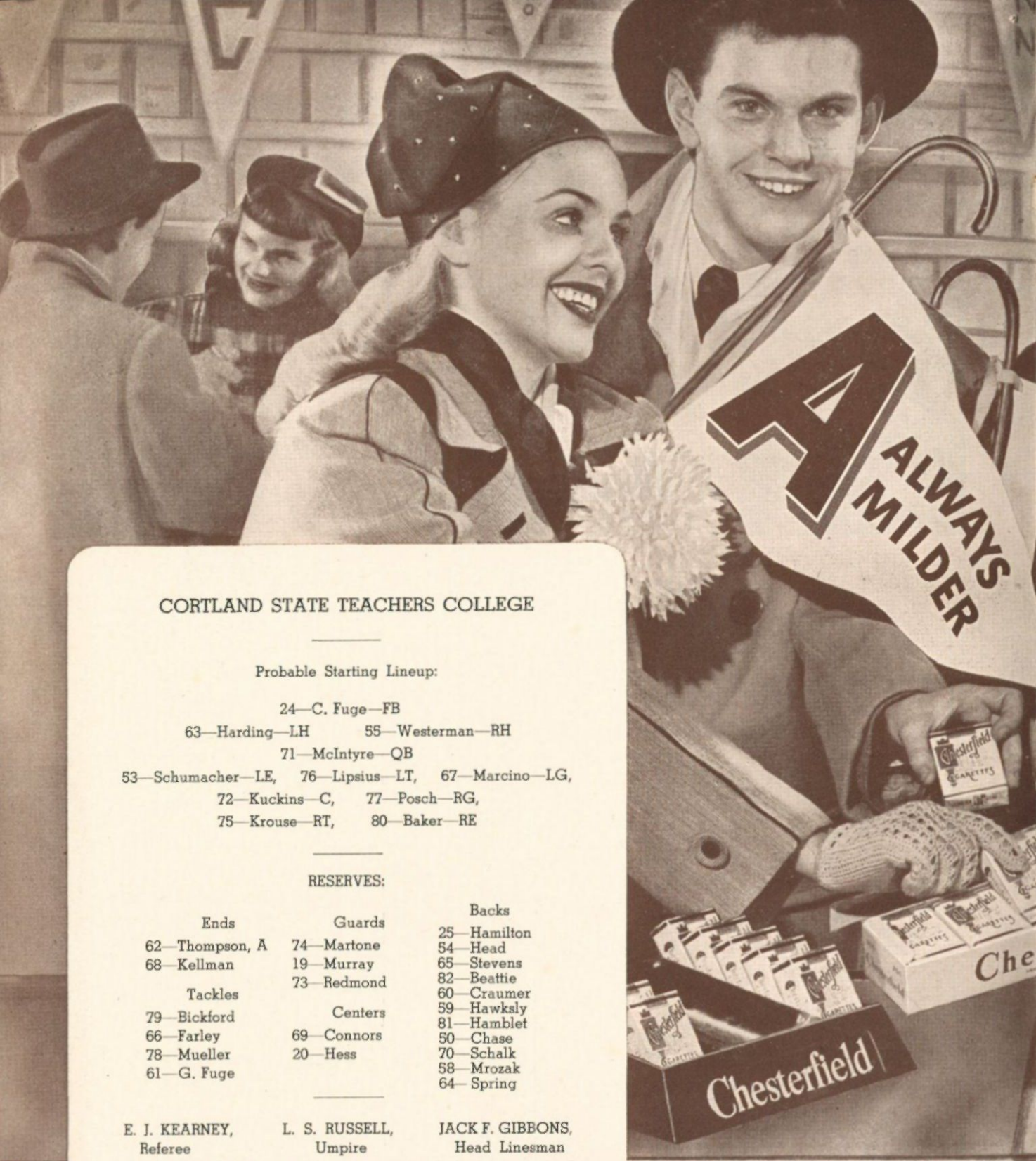
Sealtest Ice Cream

Sundaes

Sodas

Sandwiches

JIM McKENDRICK



CORTLAND STATE TEACHERS COLLEGE

Probable Starting Lineup:

24—C. Fuge—FB  
 63—Harding—LH      55—Westerman—RH  
 71—McIntyre—QB  
 53—Schumacher—LE,    76—Lipsius—LT,    67—Marcino—LG,  
 72—Kuckins—C,      77—Posch—RG,  
 75—Krouse—RT,      80—Baker—RE

RESERVES:

| Ends           | Guards     | Backs       |
|----------------|------------|-------------|
| 62—Thompson, A | 74—Martone | 25—Hamilton |
| 68—Kellman     | 19—Murray  | 54—Head     |
|                | 73—Redmond | 65—Stevens  |
| Tackles        | Centers    | 82—Beattie  |
| 79—Bickford    | 69—Connors | 60—Craumer  |
| 66—Farley      | 20—Hess    | 59—Hawksly  |
| 78—Mueller     |            | 81—Hamblet  |
| 61—G. Fuge     |            | 50—Chase    |
|                |            | 70—Schalk   |
|                |            | 58—Mrozak   |
|                |            | 64—Spring   |

E. J. KEARNEY,  
Referee

L. S. RUSSELL,  
Umpire

JACK F. GIBBONS,  
Head Linesman

FOR ALL THE BENEFITS  
OF SMOKING PLEASURE

A ALWAYS B

ALL OVER



**B** BETTER TASTING

**C**-COOLER SMOKING

**ST. LAWRENCE UNIVERSITY**

Probable Starting Lineup:

- |               |                 |             |
|---------------|-----------------|-------------|
| 4—Guardino—HB | 22—Cochi—QB     | 33—Hefti—HB |
| 32—Moro—RE    | 20—Eysaman—C    | 17—Maley—LE |
| 49—Leach—RT   | 37—J. Barron—RG | 35—Scott—LG |
|               | 44—Schein—LT    |             |

RESERVES

- |             |              |                |
|-------------|--------------|----------------|
| Ends        | Guards       | Backs          |
| 10—Sherry   | 11—Many      | 2—Chapman      |
| 12—Sawchuk  | 40—W. Barron | 5—Walters      |
| 14—O'Rourke | 41—Quigley   | 6—Hayden       |
| 26—Ryan     |              | 7—Crotz        |
| 28—Audet    | Center       | 9—Armstrong    |
| 48—Baldwin  | 8—Ford       | 13—Brettell    |
|             | 23—Oddi      | 16—Bocciolatt  |
| Tackles     |              | 34—Milligen    |
| 43—McKinley |              | 39—Pernasilice |
| 45—Haley    |              | 47—Van Derzee  |

SCORE BY PERIODS

|              | 1 | 2 | 3 | 4  | Totals |
|--------------|---|---|---|----|--------|
| St. Lawrence | 6 | 0 | 0 | 7  | 13     |
| Cortland     | 0 | 0 | 0 | 14 | 14     |

**BUY CHESTERFIELD**

*AMERICA — They're Tops*

# ST. LAWRENCE UNIVERSITY

| St. Lawrence             | Opp.              |
|--------------------------|-------------------|
| 14—Sept. 28—Union.....   | 0 at Schenectady  |
| 39—Oct. 5—Lowell Text.,. | 0..... at Canton  |
| 7—Oct. 12—Clarkson....   | 0..... at Canton  |
| 7—Oct. 19—Ithaca.....    | 2..... at Ithaca  |
| 20—Oct. 26—Middlebury..  | 13..... at Canton |
| Nov. 2—Cortland.....     | at Cortland       |
| Nov. 9—Springfield.....  | at Springfield    |

**HEAD COACH ROY B. CLOGSTON:** Returning to the gridiron as coach of the Larries this season after a four year lapse is Roy Clogston who is preparing his 70-man squad for the campaign against seven opponents this fall. A graduate of Springfield College, where he was an all-around athlete, including football, baseball and track among his activities, Clogston came to St. Lawrence in 1929 as Director of Athletics, freshman coach and varsity line coach. In 1937 he took over the head coaches' reins and has turned out SLU elevens since then, with the exception of the war years, at which time he coached two different service elevens. Aside from his football and Director of Athletic duties, Clogston has coached the wrestling, golf, skiing and hockey teams at St. Lawrence. Born at Ballston Lake, New York, in 1904, the Larrie Mentor began his long association with sports by participating on his high school baseball, basketball and track teams. After his graduation from Springfield he served for a short time on the Middlebury coaching staff before journeying to St. Lawrence.

"ALWAYS A WINNER"

**MARIAN MARGARET'S**  
Ice Cream Stores, Inc.

Rich - Pure - Delicious

**Cortland's Favorite**  
ICE CREAM

19 North Main St.  
3 Huntington St.

Cortland  
Cortland

For Quality Work, Prompt Service,  
Courteous Treatment — Patronize

**L. C. Tyler Cleaning Co.**

Phone 33 17 Court St.

Also Storage for Fur and Wool Garments

**Sullivan's**  
CORRECT FASHION SPECIALISTS

## CORTLAND ROSTER

| NO. | NAME           | POS. | HT.   | WT. | AGE | CLASS  | HOMETOWN             |
|-----|----------------|------|-------|-----|-----|--------|----------------------|
| 3   | Keenan, G.     | B.   | 5'8"  | 155 | 23  | Junior | East Rockaway, L. I. |
| 4   | Button, C.     | E.   | 6'5"  | 190 | 23  | Soph   | East Syracuse        |
| 5   | Wagoner, R.    | B.   | 5'8"  | 160 | 24  | Senior | Alexandria Bay       |
| 6   | O'Shea, T.     | B.   | 5'8"  | 185 | 23  | Frosh  | Lindenhurst, L. I.   |
| 7   | Walsh, R.      | G.   | 5'11" | 155 | 25  | Frosh  | Oceanside, L. I.     |
| 8   | Davis, J.      | E.   | 5'10" | 170 | 20  | Frosh  | Oakfield             |
| 9   | Puff, D.       | G.   | 5'9"  | 160 | 20  | Soph   | Williamsville        |
| 10  | Erickson, K.   | B.   | 5'9"  | 180 | 19  | Soph   | Elmira               |
| 11  | Saurhaffer, M. | B.   | 5'9"  | 165 | 22  | Junior | Rochester            |
| 14  | Thompson, E.   | E.   | 6'    | 170 | 17  | Frosh  | Walden               |
| 15  | Jackson, T.    | E.   | 5'11" | 178 | 19  | Frosh  | Owego                |
| 16  | Boyce, J.      | E.   | 5'11" | 180 | 20  | Frosh  | Rome                 |
| 19  | Murray, J.     | G.   | 5'9"  | 180 | 22  | Frosh  | Springville          |
| 20  | Hess, A.       | C.   | 6'1"  | 185 | 21  | Frosh  | Ilion                |
| 22  | Maloney, R.    | T.   | 5'10" | 203 | 21  | Frosh  | Woodside, L. I.      |
| 23  | Wright         |      |       |     |     |        |                      |
| 24  | Fuge, C.       | B.   | 5'11" | 200 | 20  | Frosh  | Freeport             |
| 25  | Hamilton, W.   | B.   | 5'11" | 170 | 19  | Frosh  | New Rochelle         |
| 50  | Oevllette, J.  | G.   | 5'10" | 175 | 24  | Frosh  | Saratoga             |
| 52  | Hornbeck       |      |       |     |     |        |                      |
| 53  | Schumacher, W. | E.   | 5'9"  | 170 | 21  | Senior | Valley Stream        |
| 54  | Head, H.       | B.   | 5'9"  | 187 | 22  | Frosh  | Utica                |
| 55  | Westerman, R.  | B.   | 5'9"  | 165 | 22  | Soph   | Clinton              |
| 57  | Earl, H.       | B.   | 5'8"  | 155 | 22  | Frosh  | Valley Stream        |
| 58  | Mrozack, R.    | B.   | 5'11" | 160 | 18  | Frosh  | Mineola              |
| 59  | Hawksly        | B.   | 5'9"  | 175 | 22  | Frosh  | Utica                |
| 60  | Craumer, A.    | B.   | 5'8"  | 160 | 21  | Frosh  | Corning              |
| 61  | Fuge, G.       | T.   | 6'2"  | 200 | 22  | Frosh  | Freeport             |
| 62  | Thompson, A.   | E.   | 5'9"  | 160 | 21  | Soph   | Port Henry           |
| 63  | Harding, F.    | B.   | 5'9"  | 170 | 23  | Junior | Binghamton           |
| 64  | Spring, J.     | B.   | 6'    | 165 | 22  | Senior | East Aurora          |
| 65  | Stevens, R.    | B.   | 6'    | 175 | 20  | Frosh  | Cortland             |
| 66  | Farley, H.     | T.   | 6'    | 180 | 22  | Soph   | Hempstead            |
| 67  | Marcino, J.    | G.   | 5'10" | 180 | 23  | Frosh  | Whitehall            |
| 68  | Kellman        | E.   | 6'    | 190 | 23  | Frosh  | Yonkers              |
| 69  | Connors, P.    | C.   | 5'11" | 200 | 23  | Frosh  | Saranac Lake         |
| 70  | Schalk, C.     | B.   | 5'10" | 170 | 23  | Junior | Syracuse             |
| 71  | McIntyre, J.   | B.   | 6'    | 160 | 20  | Frosh  | Mount Vernon         |
| 72  | Kuckens, J.    | C.   | 6'    | 180 | 22  | Junior | East Rockaway, L. I. |
| 73  | Redmond, F.    | G.   | 6'0"  | 195 | 22  | Soph   | Walton               |
| 74  | Martone        | G.   | 5'8"  | 180 | 20  | Frosh  | Glencove             |
| 75  | Krouse, S.     | T.   | 6'2"  | 190 | 18  | Soph   | Elmira               |
| 76  | Lipsius, H.    | T.   | 6'2"  | 205 | 24  | Soph   | Buffalo              |
| 77  | Posch, H.      | G.   | 5'10" | 210 | 19  | Frosh  | Farmingdale          |
| 78  | Mueller, F.    | G.   | 6'3"  | 215 | 22  | Junior | Montgomery           |
| 79  | Bickford, H.   | T.   | 6'4"  | 216 | 23  | Soph   | Saranac Lake         |
| 80  | Baker, L.      | E.   | 6'1"  | 180 | 23  | Junior | Baldwinsville        |
| 81  | Hamblet, F.    | B.   | 6'    | 190 | 23  | Soph   | Hudson Falls         |
| 82  | Beattie, C.    | B.   | 5'11" | 170 | 23  | Soph   | Watertown            |



**THOMPSON**



**KROUSE**



**HESS**



**WESTERMAN**



**KELLMAN**



**FARLEY**



**DORAN**



**FUGE**



**CHASE**



**KEEFER**



**CRAUMER**



**PUFF**



**SCHALK**



**WALSH**



**MARTONE**



**MUELLER**

*Compliments of*

Alpha Sigma Alpha  
Clio Chapter



*Compliments*  
Theta Phi

Compliments of  
NU  
SIGMA CHI

---

---

## CORTLAND FOOTBALL SCHEDULE

September 28—Bergen-6 at Cortland-53  
October 12—Cortland-6 at Mansfield-9  
October 19—Stroudsburg at Cortland  
October 26—Cortland at Alfred (night game)  
November 2—St. Lawrence at Cortland  
November 9—Hartwick at Cortland  
November 16—Cortland at Springfield

---

---

## HOTEL CORTLAND

Cortland, New York  
Where the Valleys Meet

---

The Coffee Shop  
and Grill

Endorsed by Duncan Hines, our  
Coffee Shop offers food that is  
appetizing and of the highest  
quality.

---

T. P. SIMMONS, Mgr.

## The CORTLAND LAUNDRY

---

We Keep the College Clean

---

Send it to

## The Cortland Laundry

ALL FAMILY SERVICES

RUG CLEANING





SOCCKER COACHES

(l) Ralph Roberts. (r) Fred Holloway.



First score against Oswego.  
'Goalie at work'.

---



---

SOCCKER

- September 27—Oswego-0 at Cortland-11
  - October 5—Cortland-2 at Springfield-9
  - October 12—Brockport-1 at Cortland-3
  - October 19—Cortland at Syracuse
  - October 26—Rochester at Cortland
  - November 2—Cortland at Colgate
  - November 6—Cornell at Cortland
  - November 16—Cortland at Stroudsburg
- 
- 

Competing in their eighth season of Intercollegiate Soccer under the tutelage of Coach T. F. Holloway, the Red Mules of Cortland State Teachers College are once more attempting to battle their way into the National Soccer spotlight. For many years the teams representing Cortland have always been among the leaders in the East, taking on all comers sometimes winning, sometimes losing but always putting up a good fight.

Coach Holloway is a well known figure in the soccer world having played, coached and talked about the game for a good many years. Incidentally, he can still play a pretty good game as some of the Varsity men will tell you.

So far this season the Varsity has accounted for four victories and has been defeated once. In the opening game of the season the Red Mules handed Oswego State a 11-0 setback but the following week-end they tasted defeat at the hands of Springfield College by a 9-2 score. Then they won a 3-1 encounter with Brockport and took a 6-2 win over Syracuse. Last Saturday Rochester fell on the short end of a 3-0 count, and today, the Cortland booters are at Colgate. **GOOD LUCK COACH HOLLOWAY AND THE RED MULES.**



Left to Right: Lois Tiedman, Phyllis Seidler, Lucy Gennett, Ruth Dykeman, Jean Townsend, Margaret Jones



ATHLETIC  
PUBLICITY  
"Staff"



'Chic' Walsh, Ass't. Publicity Director.

'Hank' von Mechow, Publicity Director.

Top row (l to r) Monroe, Robinson, Miller.  
Bottom row (l to r) Novak, Fowler, Hunt, DeFilippo.

# PENALTIES

1. Taking more than four times out during either half.
2. Illegal delay of game.
3. Failure of substitute to report to an official.
4. Violation of kickoff formation.
12. Team not ready to play at scheduled time.
13. Violation of rules during intermission.
14. Illegal return of suspended or disqualified player.
15. Failure to stop at least one second on shift play.
24. Striking, kneeling, or kicking opponent — half the distance to the goal and disqualification of offending player.
25. Foul within one yard line — half the distance to the goal.
26. Interference by defensive team on forward pass—first down for passing team at spot of foul.

## LOSS OF FIVE YARDS

5. Illegal return or withdrawal of eligible players.
6. Failure to maintain proper alignment of offensive team before ball is snapped. Also, backfield man illegally in motion.

## LOSS OF FIFTEEN YARDS

16. Intentional grounding of forward pass.
17. Interference by member of passing team with defensive player on an interception. (Also loss of a down.)
18. Illegal use of hands and arms by offensive player.

## OTHER PENALTIES

27. Illegal forward pass — five yards from spot of pass, also loss of down.
28. Flagrant roughing of kicker — disqualification, plus fifteen yards.
29. Flagrant unsportsmanlike conduct — disqualification, plus fifteen yards.

7. Offside by either team, or encroachment on neutral zone.
8. Attempt to draw opponents off-side.
9. Flying block or flying tackle.
10. Illegal use of hands and arms by defensive player.
11. Crawling by runner.
19. Defensive player striking opponent above shoulders.
20. Roughing the kicker.
21. Piling up, hurdling, clipping.
22. Tackling player out of bounds.
23. Coaching from the sidelines.
30. Forward pass becoming incomplete beyond the line of scrimmage by touching or being touched by an ineligible player—loss of fifteen yards from spot of preceding down, play to count as down.
31. Illegal touching of kicked ball inside opponent's 10 yard line—touchback.

ALPERT'S

Jewelers and Opticians

63 Main St.

Cortland, N. Y.

MONARCH  
AUTO STORES

99 Main St. Cortland

Complete Line of

AUTO ACCESSORIES

TOYS

RADIOS

SPORTS EQUIPMENT



"Which of you All-Stars came from California?"

# Compliments of

## AGONIAN



# Compliments of

## ALPHA

## DELTA



# Compliments of

## ALPHA

## GAMMA

## SIGMA



# Compliments of

## ARETHUSA



Offside and violation of kickoff formation. (Penalty 5 yards.)



Unsportsmanlike conduct. (Penalty - 15 yards.) For flagrant unsportsmanlike conduct - 15 yard penalty and disqualification.



Illegal formation or position of one or more players. (Penalty - 5 yards from where ball was put in play.)



Player illegally in motion. (Penalty, 5 yards. If from shift or huddle, 15 yards.)



Intentional grounding of forward pass. (Penalty - loss of down and 15 yard penalty from spot of preceding down.)



Unnecessary roughness, illegal defensive use of the hands. (Penalty, 15 yards.)



Crawling, pushing, or helping ball-carrier. (Penalty for helping ball-carrier, 15 yards; otherwise, 5 yards.)



Holding. (Penalty - by offense, 15 yards; by defense, 5 yards.)



Scrape-touchdown, field goal, or conversion.

Military salute also used for clipping, followed by striking the back of the knee with hand. (Penalty, 15 yards.) Signal also used for disqualification fouls and for running into or roughing the kicker. In the latter case, the military salute is followed by swinging the leg as though punting.



Safety



Delay of game or extra time-outs. (Penalty, 5 yards.)



Illegal forward pass



Interference with forward pass or fair catch, pass touching ineligible player, or "screening" pass receiver. (If penalty on offense, 15 yards and loss of down; interference by defense, ball to offense on spot of foul as first down.)



Penalty refused, incomplete pass, missed field goal or conversion, both sides offside, etc.



Time out.



Ball illegally touched, kicked or batted.

Bar - **HOLLYWOOD** - Grill

Best

-- Ange --

Wishes

For a

Successful

-- Phil --

Season

25-27 Groton Ave.

Phone 2092

**Home of Fine Foods and Beverages**

"ONE OF THE GREAT CLOTHING STORES OF THE STATE"

## **THE SPORT SHOP**

in Ithaca . . . invites you to inspect one of the largest and finest collections of fine Clothing, Furnishings and Sportswear for College Men and Business Men to be found anywhere in America!

Fashion Park, Braebrooke, Clipper Craft, Timely Clothes ● Nunn Brush Shoes ●  
Dobbs Hats ● Arrow Shirts ● Interwoven Hose ● McGregor Sportswear ●  
Team Equipment by A. G. Spaulding, Rawlings.

**SPORT SHOP GYM APPAREL**

209-211 E. State St., Ithaca, N. Y.

Phones 2460 - 2680