

SUNY College Cortland

## Digital Commons @ Cortland

---

Men's Basketball Documents

Men's Basketball

---


1957

### 1957 Program, Men's Basketball

State University of New York College at Cortland

Follow this and additional works at: [https://digitalcommons.cortland.edu/menbasketball\\_documents](https://digitalcommons.cortland.edu/menbasketball_documents)

---



# **CORTLAND vs. MANSFIELD**

**College Gym Jan. 16, 1957**

**8:30 p. m.**



# PRATT-ically Speaking

by Jim Pratt, Student Director of Publicity

Tonight marks the last appearance of the Red Dragons until next semester, as the Dragons entertain the Mansfield State Teachers College basketballers. The junior varsity squad entertains the Keystone Junior College team in the opener.

Tonight also marks the first visit to Cortland for William Gibson, able mentor of the mountaineers, experiencing his first year as a college coach. With eleven lettermen around which to build a nucleus, Coach Gibson should have his ball club up for this one tonight. The mountaineers use a man for man type defense but often switch into a zone, depending upon the situation. Coach Gibson relies heavily on a fast break type offense, with several screen and pivot plays in the forward court.

Joe Witowski, mountaineer captain, will probably be the Dragons' biggest single threat in that he was the team's leading rebounder and third high scorer a year ago. Don Lee, an outstanding guard and second high scorer for the red and black, will also be a rough contender in tonight's contest. All in all the mountaineers have good height and with eleven lettermen are bound to have good depth along with plenty of game experience.

Cortland will put their 8-4 record on the line tonight, in an attempt to make it 4 straight. In recent games, Hal VanEardon has led the scoring

for the Coreymen, with 19 and 16 points against Brockport and Buffalo respectively. What has been highly commendable in the past two games is the fine display of rebounding and clutch points by "Moose" Chianese, reserve center for the Dragons. Since Wayne Weiss, regular center for the Coreymen, has been laid up with an injured foot, Chianese has had the opportunity to display some fine talent for the Dragons. He has worked in well with Dawson, at the weakside forward spot.

In Cortland's hard-fought victory over the Bulls from Buffalo, Bill Popelka came off the bench with 12 minutes left to play and scored 12 points, 10 of which were from the free throw line. It is certain that he will see plenty of action tonight as will Don Axtell, jump shot artist.

With Weiss out, Coach Corey will probably go with Lee at center, with Chianese seeing plenty of action in that spot, Dawson and Grace at the forwards, and VanEardon and La Grand at the guards. La Grand put on a fine display of ball handling in the Buffalo game as repeatedly he eluded double teamings with his stop and go type of dribbling.

After tonight, the Dragons settle down to some studying for finals and resume on this court February 2, against their old rivals, the Ithaca Bombers.

## "Marine Midland"

OF SOUTHERN NEW YORK

COMPLETE BANKING SERVICES

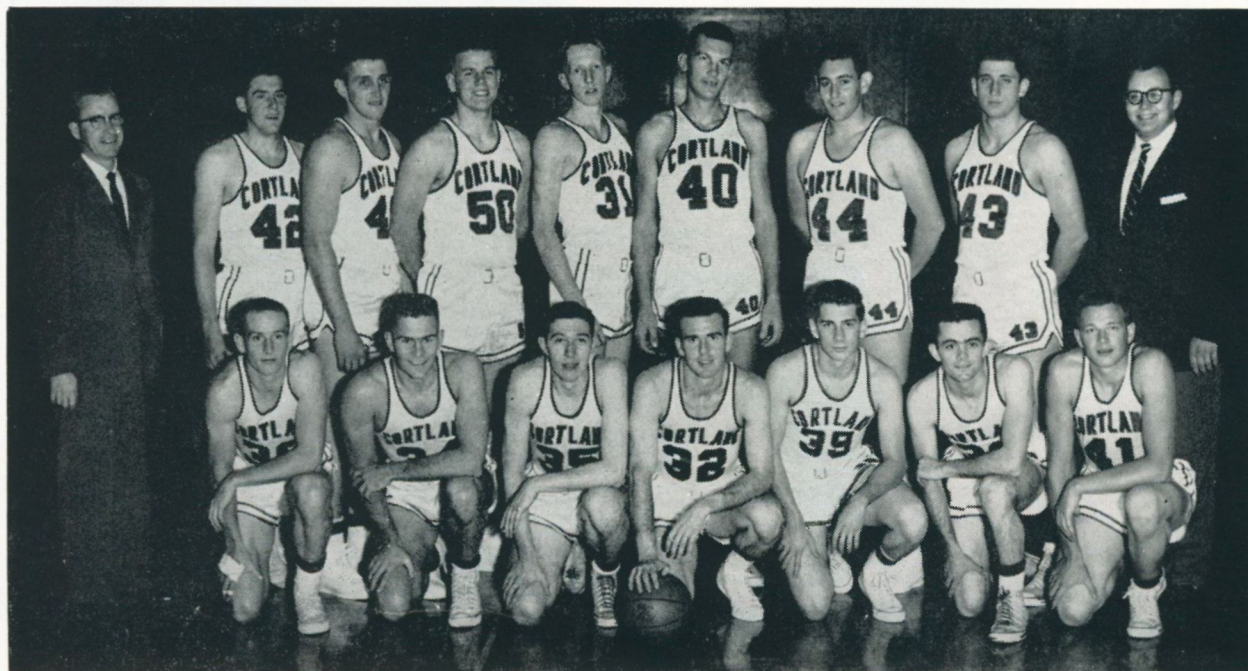
Including

TWENTY FOUR HOUR BANKER and SIDEWALK TELLER

Cortland Office

Member F.D.I.C.

# Cortland State Varsity Basketball Squad



Kneeling — left to right: Axtel, Rathjens, Popelka, Elwell, Parelli, LaGrand, VanEarden.  
 Standing — left to right: Coach Corey, Grace, Weiss, Dawson, Leahy, Lee, Chianese  
 Deger, Mgr. Shaffer

## CORTLAND STATE BASKETBALL ROSTER

No.	Name	Home Address	Age	Ht.	Wt.	Class
30	Axtell, Don	Bath	23	6'0"	170	So
44	Chianese, Bud	Bronx	20	6'5"	220	Jr
* 50	Dawson, Frank	Pearl River	21	6'5"	225	Sr
* 43	Deger, Bob	Levittown	20	6'3"	210	Jr
32	Elwell, Leo	Hyde Park	21	6'0"	165	Sr
* 42	Grace, Jon	Greenlawn	20	6'2"	195	Jr
* 33	LaGrand, Louis	Yorkville	21	5'9"	143	Sr
31	Leahey, Ed	Hollis	19	6'5"	187	So
* 40	Lee, Dan	Williamsville	24	6'6"	210	Sr
39	Parelli, Ron	Cortland	21	5'9"	155	Jf
* 35	Popelka, Bill	Endicott	21	6'1"	185	So
34	Rathjens, John	Hollis	25	6'2"	180	Sr
* 41	VanEarden, Harold	Clymer	22	6'1"	175	Sr
* 45	Weiss, Wayne	Hamburg	19	6'4"	226	Jr
* Lettermen						

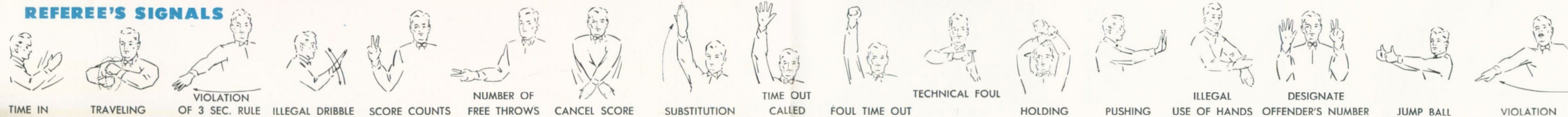
Coach: Whitney Corey

Manager: Bill Schaffer

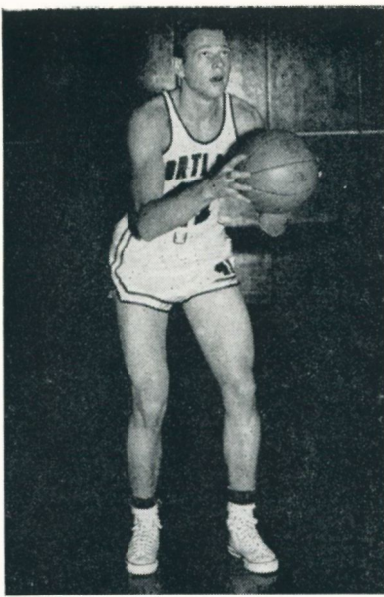
Assistant Manager: Dick Suprina

Assistant Manager: Larry Vredenburg

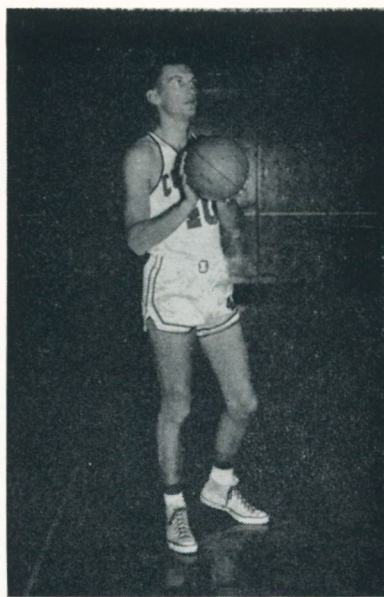




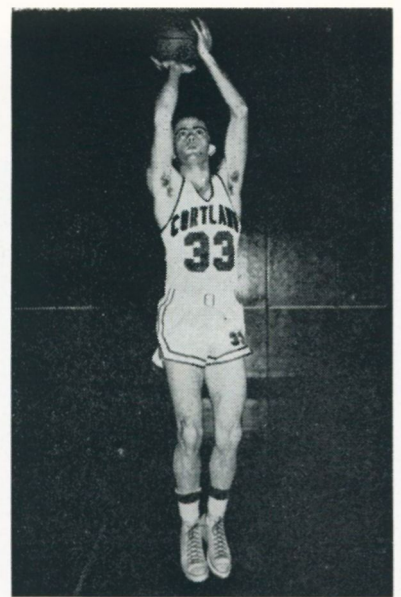




Harold VanEarden

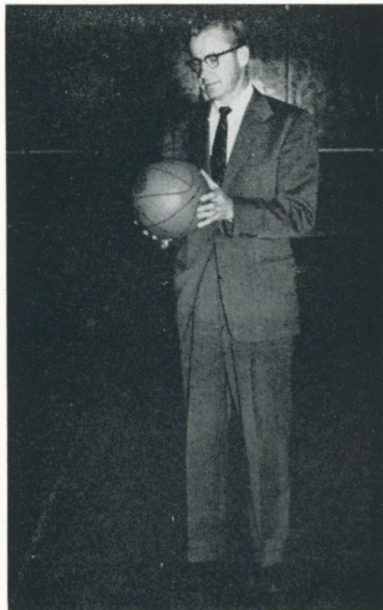


Dan Lee



Louis LaGrand

Red

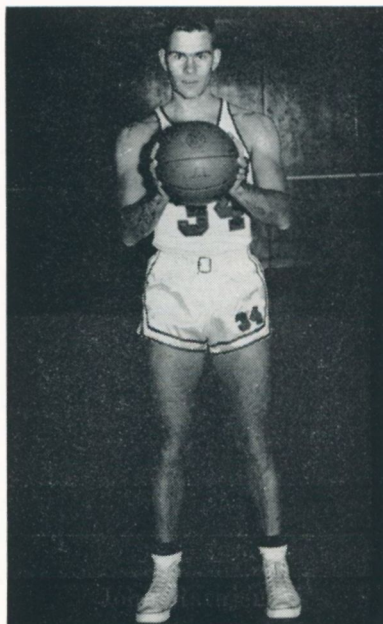


Whitney Corey, Coach

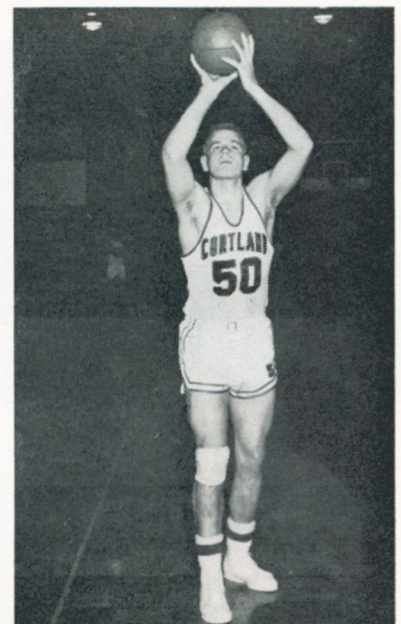
Dragons



Leo Elwell



John Rathjens



Frank Dawson

# MANSFIELD STATE BASKETBALL ROSTER

No.	Name	Pos.	Hgt.	Wt.	Class	Home Town
Bl. Wh.						
35 50*	Enderly, G. ....	C	6'5"	194	Jr	Elkland
	Biddle, L. ....	F	5'10"	159	So	Canton
	Firestone, R. ....	F	5'10"	143	Fr	Lebanon
32	Gamble, M. ....	G	5'11"	158	Fr	Pt. Allegany
	Grodis, D. ....	F	6'1"	164	Fr	W. Pittston
20 20	Hansen, H. ....	G	5'9"	152	So	Bradford
30 51*	Hvizdak, P. ....	G	6'1"	197	Jr	Bradford
34	Krieg, D. ....	F	5'10"	187	Jr	Bradford
42 35*	Lee, D. ....	G	6'2"	209	Jr	Carbondale
45 53*	Linkoski, J. ....	C	6'5"	215	Sr	Larksville
	Mitchell, D. ....	G	5'10"	142	Fr	Troy
	Moore, G. ....	C	6'3"	209	Fr	Shamokin
25 23*	Murphy, J. ....	F	6'2"	193	Jr	Carbondale
23 22*	O'Dell, B. ....	G	5'10"	165	Jr	Mansfield
22 52*	Palmer, B. ....	G	6'0"	178	Sr	Nanticoke
32 25*	Peterson, J. ....	F	6'2"	192	Jr	Bradford
34 24*	Siracuse, V. ....	G	5'11"	178	Jr.	Swoyersville
	White, B. ....	G	5'11"	176	So	Sayre
44 55*	Witchert, T. ....	C	6'4"	228	Sr	Coudersport
33 54*	Witowski, J. ....	G	6'2"	198	Sr	Kulpmont

\* Lettermen

Coach: William Gibson

COMPLIMENTS OF

# The First National Bank Of Cortland

STUDENTS' CONVENIENCE CHECKING ACCOUNTS

CORNER MAIN STREET AND CENTRAL AVENUE

"A GOOD CORNER TO BANK ON"

Member of Federal Deposit Insurance Corporation

PHONE SK 6-2831



COMPLIMENTS OF

# CORTLAND STATE TEACHERS

## FOOD SERVICE

COLLEGE CAFETERIA

BROCKWAY HALL

SNACK BAR

# SANDERS SPORT AND LUGGAGE SHOP

32 N. MAIN ST.

PHONE SK 6-8401

*Everything In Sporting Goods*

### SPORTS

GOLF, TENNIS, FOOTBALL  
FIELD HOCKEY, SKIING  
ARCHERY  
SHOES FOR ALL SPORTS

### LUGGAGE

BILLFOLDS, BELTS, HANDBAGS,  
LUGGAGE, DOG SUPPLIES,  
GYM BAGS  
LAUNDRY CASES