

SUNY College Cortland

Digital Commons @ Cortland

Greek Documents

Greek Societies

1960

Alpha Sigma, Parents Weekend, 1960

State University of New York at Cortland

Follow this and additional works at: https://digitalcommons.cortland.edu/greek_docs

PARENT WEEKEND



ALPHA SIGMA -- 1960

PARENT WEEKEND

May 6-8, 1960

PROGRAM

Friday	8:00	Spring Music Concert	Auditorium
Saturday	1:00	Luncheon and Entertainment	Shamrock
Saturday	3:00	Parent-Faculty Coffee Hour	Brockway Hall
Saturday	6:30	Twilight Supper and Card Party	House

OFFICERS

Office	September 1959	February 1960
President	Jean Harris	Lorri Kaziun
Vice President	Joan Henningson	Maureen O'Rourke
Recording Secretary	Linda Giles	Barbara Dirlam
Corresponding Secretary	Ruth Lord	Nancy Leiser
Treasurer	Norma Davis	Peg Heary
Assistant Treasurer	Peg Heary	Rita Strauss
Business Manager	Nancy Leiser	Annette Kaplan
Social Chairman	Tish Wilkoc Marian Schalck	Jean Harris Nancy Williams
Editor	Helen Carpenter	Patti Andrews
Historian	Sue Adams	Sue Adams
Chaplain	Barbara Shaw	Anita Emeterio

Dear Parents -
I have looked forward to meeting you
so much that I am most happy to welcome
you into "our home."

The girls have planned a delightful
week-end - the country is beautiful
and we are counting on the weather
man to co-operate.

I hope that you will find
your visit with your daughter
and her "sisters" a real pleasure.

Sincerely,
Helen I. Ogle
"Mo"

SEPTEMBER, 1959 - JANUARY, 1960

The Annual Alpha Sig-Nu Sig Jam Session was held in the Union. It included the Frosh-Soph dance contest and the attendance was the largest ever.

The marshmallow roast for sorority and fraternity members was held in our back yard after a regularly scheduled meeting. Coffee and tea were also served. Everyone joined in singing college songs and oldtime favorites.

We initiated a Roller Skating Party to which we invited Arethusa and Alpha Delta. This event proved to be such a success that we are already looking forward to one next year. It must be admitted, however, that several girls sat down quite gingerly for several days afterward.

The Goofy Golf Tournament was blessed by warm weather, large attendance and an abundance of real "goofs". The grand prize went to Arethusa who had many entrants and instigated many laughs.

A "come as you are" party was held for the out of house girls with those in house as hostesses. Since it was a complete surprise, it proved quite hilarious for many were caught in p-j's, etc. Games, singing, and refreshments were enjoyed by all. Many are convinced this should be a traditional event in future years.

Our Homecoming luncheon was a success, with many alumnae returning for the day. The only thing to mar the weekend was the rain. It was a bit disheartening to see hours of hard work ruined in a few minutes. Our float, dedicated to the visiting alumni, was entitled "A Tip to the Tops". The effigy was "Brockport's in Hot Water".

Gail Avy, one of our seniors, was elected Beta Queen. Three girls from Alpha Sig were among the nine in her court. They were Marie Reiss, Bev Tuttle and Linda Landers.

FEBRUARY, 1960 - JUNE, 1960

Everyone is congratulating the cabinet, the various committees, and themselves for the tremendous success of our formal initiation, held at the V.F.W. Dean Brown was the guest speaker and gave a truly inspiring talk on Alpha Sig and what it can do on campus. Forty pledges, including Helen Ogle, our house mother, were initiated in an impressive candlelight ceremony.

The senior awards were also presented by Maureen O'Rourke, our vice president. Tish Wilkoc received the service award, Lorri Kazium, the activities award, and Jean Harris, the Alpha Sig girl award.

The theme of this year's Frolics was comic strip characters. The title of our skit was "Caucus Strip". Although it was a great skit, we didn't place. Practically everyone chipped in to do something for the show. We all had a great time working together.

During intersession, the basement of the house was filled with paint cans and painters. The 1959 pledge class was busily carrying out its pledge project of painting the basement. The walls are now green and white, decorated with murals illustrating Alpha Sig traditions. When the sisters returned they all agreed that the basement looked terrific.

Now we are tuning up and practicing for the sing. Marge Robertson was elected song leader and Mary Lou Schardt was re-elected pianist. This is a great combination. The song that we selected is, "I Talk to the Trees". We're confident that we have a good chance to again win the Sing cups.

FORTH COMING ACTIVITIES

Alpha Sig Weekend	April 29, 30, May 1, 1960
Parent Weekend	May 6-8, 1960
Moving Up Day	May 17, 1960
Spring Weekend	May 20-22, 1960
Baccalaureate	June 10, 1960
Commencement ! !	June 12, 1960

SENIORS

(we took all the honors)

Gail Auy
Gen Berhans
Joyce Bertino
Gloria Button
Helen Carpenter
Norma Davis
Barbara Dirlam
Anita Emeterio
Natalie Fain
Linda Giles
Jean Harris
Carol Helwig
Annette Kaplan
Lorri Kazium

Nancy Leiser
Gerri Lewis
Ruth Lord
Lorraine McCormick
Barbara Michaelis
Carol Pannell
Dotty Parsons
Marian Schalck
Mary Lou Schardt
Gloria Scharf
Pris Tedesco
Linda Wayne
Tish Wilkoc
Nancy Williams

JUNIORS

(we had all the dates)

Sue Adams
Jane Atz
Marion Boyn
Pat Bruner
Carol Burke
Sandy Card
Mary Darling
Marianne Delaney
Margo Desmond
Betty Fitzgerald
Jan Hauser
Peg Heary
Joan Henningson
Marion Higman
Chris Kemp

Linda Landers
Marge Latimer
Jeane Lefrak
Pat McKeon
Cathy Porretta
Marge Robertson
Barbara Shaw
Pat Sherwin
Diana Stone
Rita Strauss
JoAnn Szalay
Bev Tuttle
Jeanne Upper
Judy Westfall
Barbara Wirth
Ellen Young

SOPHOMORES

(we did all the work)

Joan Ahlers
Patti Andrews
Nancy Belloff
Kathy Bensley
Marlene Braslow
Beth Burkhardt
Bonnie Cole
Lidia DiBeradino
Connie Egan
Linda Eckerson
Bette Ellenbogen
Judy Forrest
Susan Gilrod

Susan Gute
Lynn Hardy
Peggy Harrower
Marcia Hickey
Dodie Lipsky
Sue Ann Lurie
Judy Mallon
June Martin
Toba Montag
Sheila Montague
Maureen O'Rourke
Joan Pisciotta
Marie Reiss

Nancy Riccio
Elaine Rhode
Marilyn Robert
Sandy Russo
Mary Schleiermacher
Becky Schwartz
Norma Smoczynski
Kathy Stearns
Suzanne Sylvor
Jill Teeter
Sue Ann Thursby
Ellen Weinberg
Jeanne Wilkoc

FRESHMEN

(we didn't belong to Cliō)

Jeanne Carlini
Mary Lou Clark
Mary Conte
Joyce Davidson
JoAnn Friedlander
Rae Gigliotti
Ingrid Good
Lucy Gruber
Marilyn Hartlieb
Barbara Johnstone
Margie Kucks
Iris Ladimer

Jeannette Paddock
Jackie Petkov
Jo Ann Plishner
Jan Richard
Linda Rofman
Norma Semken
Claudia Skiba
Helen Solang
Gloria Soskel
Joyce Tedesco
Sue Welcome



Rushing

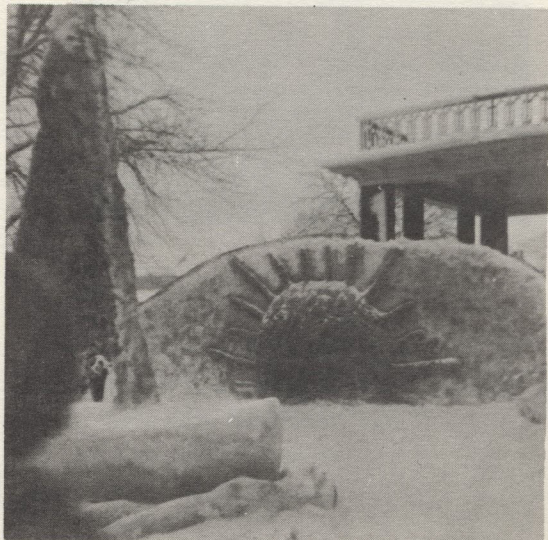


Pledging



Merry Christmas

*Winter Carnival
Effigy
(2nd Place)*





"I can't believe it"



"Aloha"



